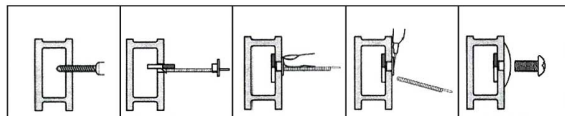




ITEM TECHNICAL CARD



d - thread diameter (mm)	M8
hole diameter (mm)	14,0
L1 (mm)	136,0
L2 (mm)	159,0
grip range (mm)	10 - 100
L (mm)	32,0
axial proof load for thread (N)	7840
W1 (mm)	13,6
W2 (mm)	12,0

DESCRIZIONE \ DESCRIPTION: RIVTOG-Steel mechanical nut for blind hole M8		CATEGORIA \ CATEGORY: 5742400	
MATERIAL \ MATERIAL:		TRATTAMENTO TERMICO \ HEAT TREATMENT:	NOTE \ NOTES:
ESEGUITO DA \ DRAWN BY: RIVIT	DATA:	TRATT. SUPERFICIALE \ SURF. TREATMENT:	Rugosità superficiale generale: General surface roughness:
CONTROLLATO DA \ CHECKED BY: RIVIT	DATA:	PROFONDITÀ TRATTAMENTO TERMICO (SURF) [mm]: HEAT TREATMENT (SURF) DEPTH [mm]:	NON SCALARE IL DISEGNO DO NOT RESIZE THE DRAW
APPROVATO DA \ APPROVED BY: RIVIT	DATA:	DUREZZA \ HARDNESS:	FOGLIO \ SHEET: 1 OF 1 FORMATO FOGLIO: A4 SHEET FORMAT: A4
		PESO \ WEIGHT:	Scale \ SCALE: Mod.P023_07 CARTIGLIO \ FORMAT
		 FASTENERS & TOOLS  RIVIT.IT	