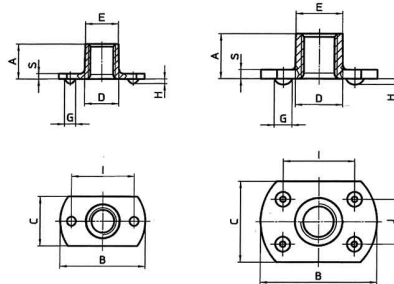
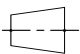
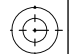




ITEM TECHNICAL CARD



E (mm)	11,8
G (mm)	4,0
A (mm)	12,0
C (mm)	18,0
B (mm)	26,0
D (mm)	12,0
Durchmesser	M10
S (mm)	2,0
H (mm)	1,3
I (mm)	16,0
J (mm)	10,0

DESCRIZIONE \ DESCRIPTION: Schweißmutter mit Flansch Rohstahl M10x12			CATEGORIA \ CATEGORY: 43685GR	
MATERIAL \ MATERIAL:		TRATTAMENTO TERMICO \ HEAT TREATMENT:		NOTE \ NOTES:
ESEGUITO DA \ DRAWN BY: RIVIT	DATA:	TRATT. SUPERFICIALE \ SURF. TREATMENT:	Rugosità superficiale generale: General surface roughness:	
CONTROLLATO DA \ CHECKED BY: RIVIT	DATA:	PROFONDITÀ TRATTAMENTO TERMICO (SURF) [mm]: HEAT TREATMENT (SURF) DEPTH [mm]:	NON SCALARE IL DISEGNO DO NOT RESIZE THE DRAW	
APPROVATO DA \ APPROVED BY: RIVIT	DATA:	DUREZZA \ HARDNESS:	FOGLIO \ SHEET: 1 OF 1	FORMATO FOGLIO: SHEET FORMAT: A4
		PESO \ WEIGHT:	Scale \ SCALE:	CARTIGLIO \ FORMAT Mod.P023_07
			 	
			 FASTENERS & TOOLS  RIVIT.IT	